



PLANT KINGDOM

- Eukaryotic (multi-celled)
- Autotrophs (makes own food)
- Nonvascular (without roots
ie mosses) or
- Vascular (with roots)
 - Seedless: ferns
 - _Seeds:....



TYPES OF PLANTS

GYMNOSPERM

- needle like leaves.
- seeds not protected.



ANGIOSPERM

- produce flowers.
- seeds protected by fruit.

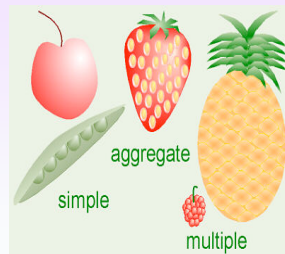


GYMNOSPERM



Seeds without cover

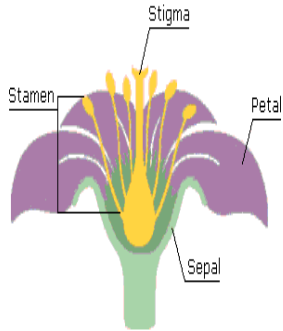
ANGIOSPERM



Seeds with cover



FLOWERS

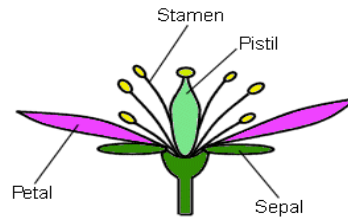


Many flowers have both male & female parts within.

FLOWERS

MALE = STAMEN

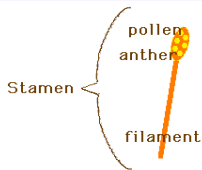
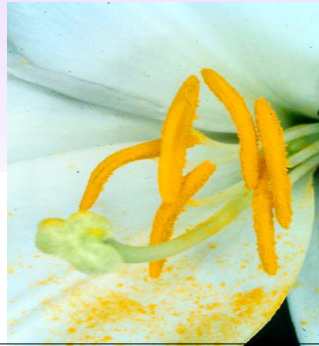
FEMALE = PISTIL



FLOWERS

MALE

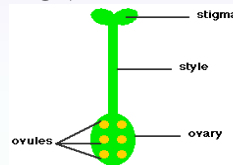
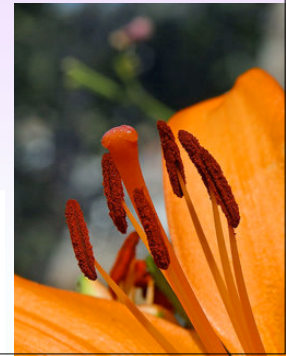
- POLLEN
- ANTHER
- FILAMENT



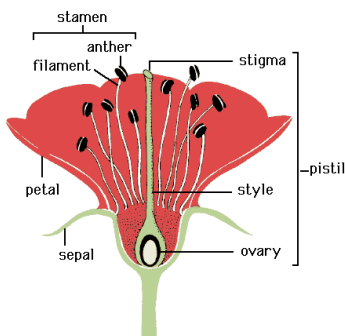
FLOWERS

FEMALE

- STIGMA
- STYLE
- OVARY

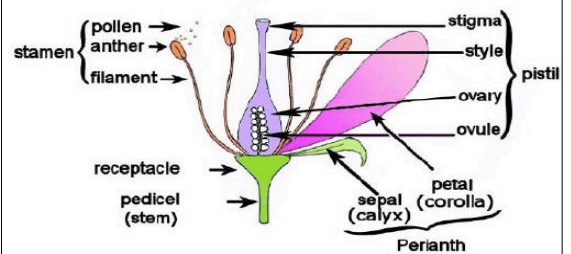


male



female

Parts of a Flower



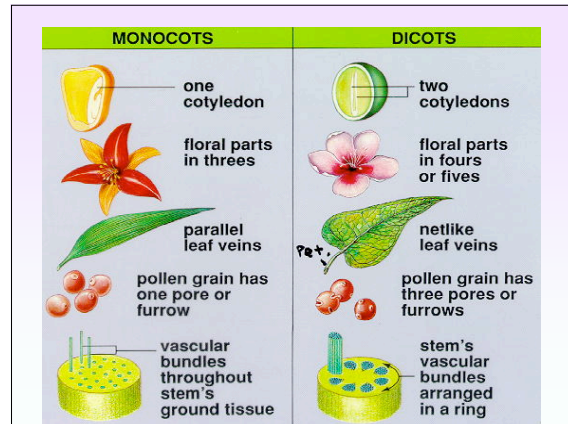
FLOWERS

MONOCOTS

- flower parts in three's.
- parallel veins.

DICOTS

- flower parts in four's & five's.
- net-like veins.



MONOCOTS



DICOTS



HOW SPREAD

