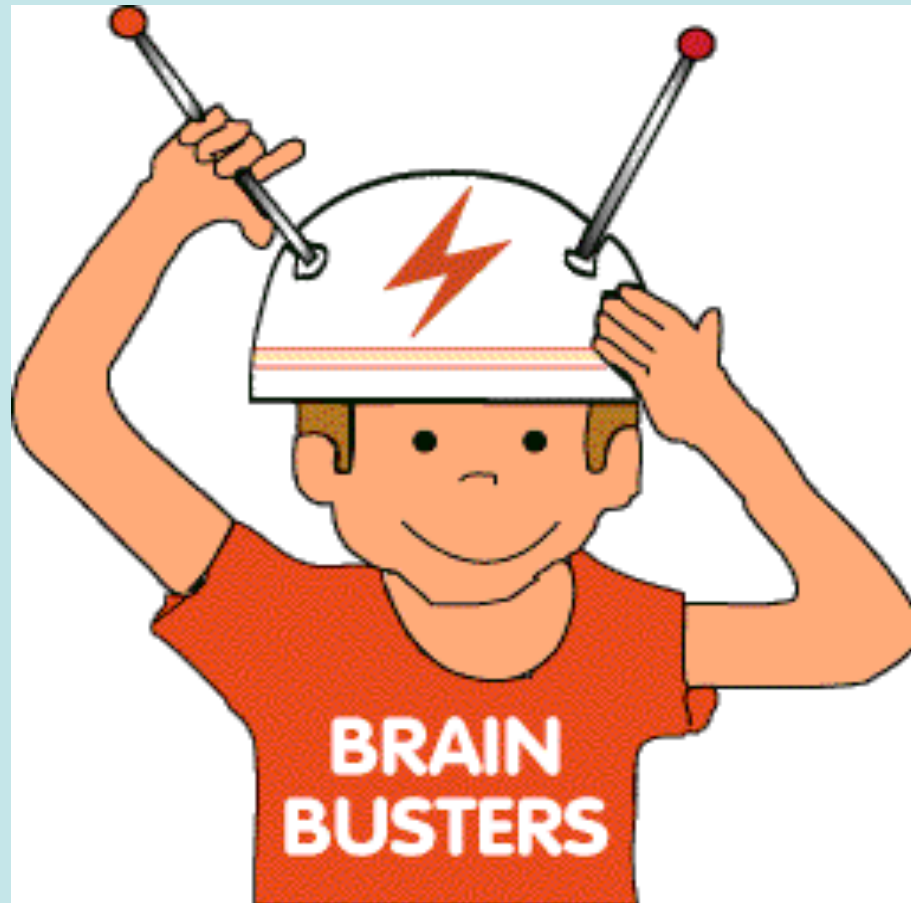


NERVOUS SYSTEM

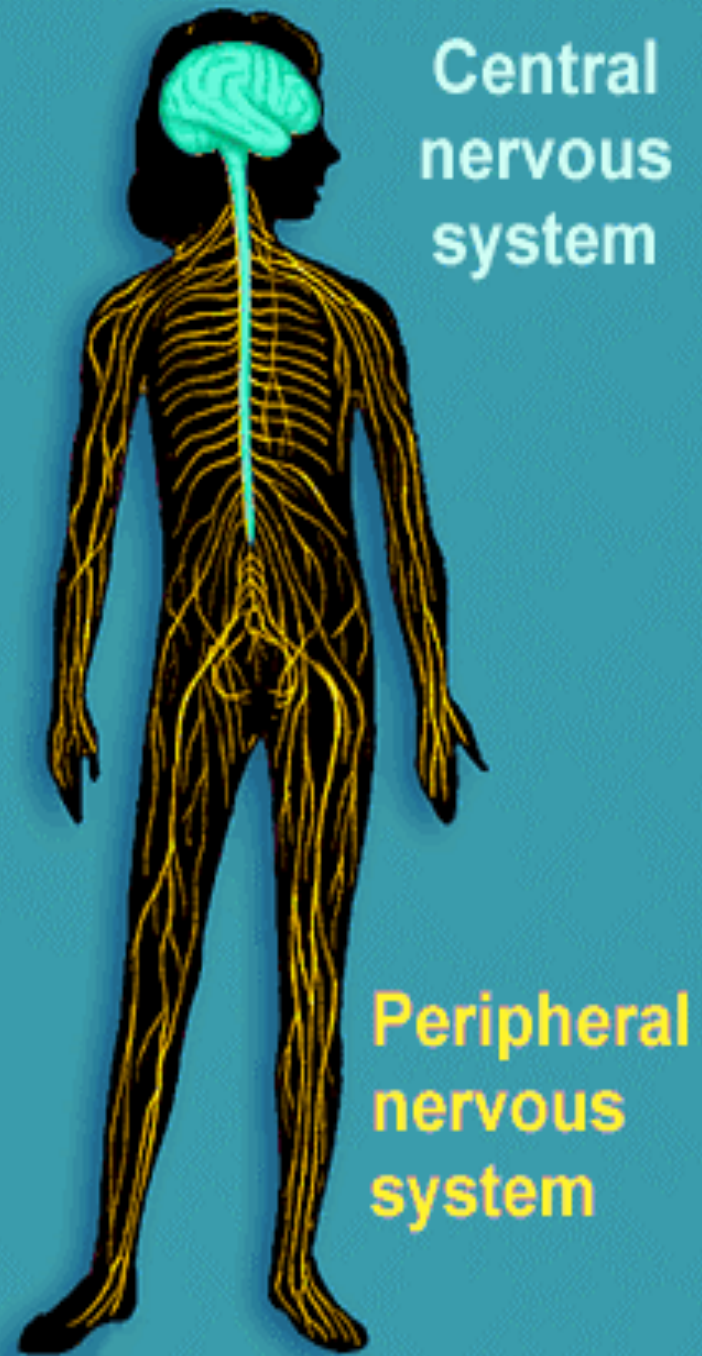


FUNCTION

- INTERPRET INFORMATION FROM ENVIRONMENT.
- RESPOND TO INFORMATION.
- CONTROL BODY.

CNS

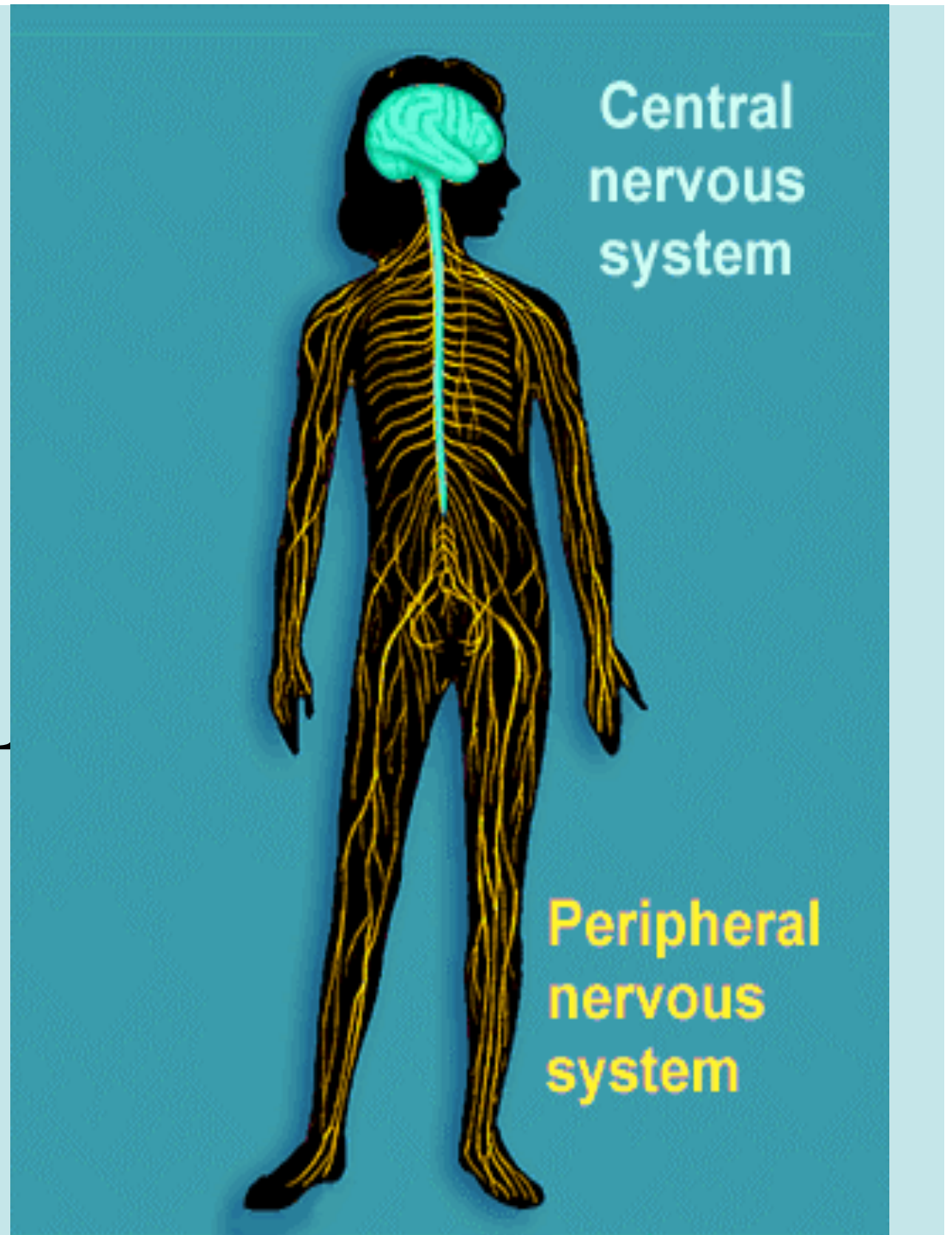
BRAIN & SPINAL CORD



PNS

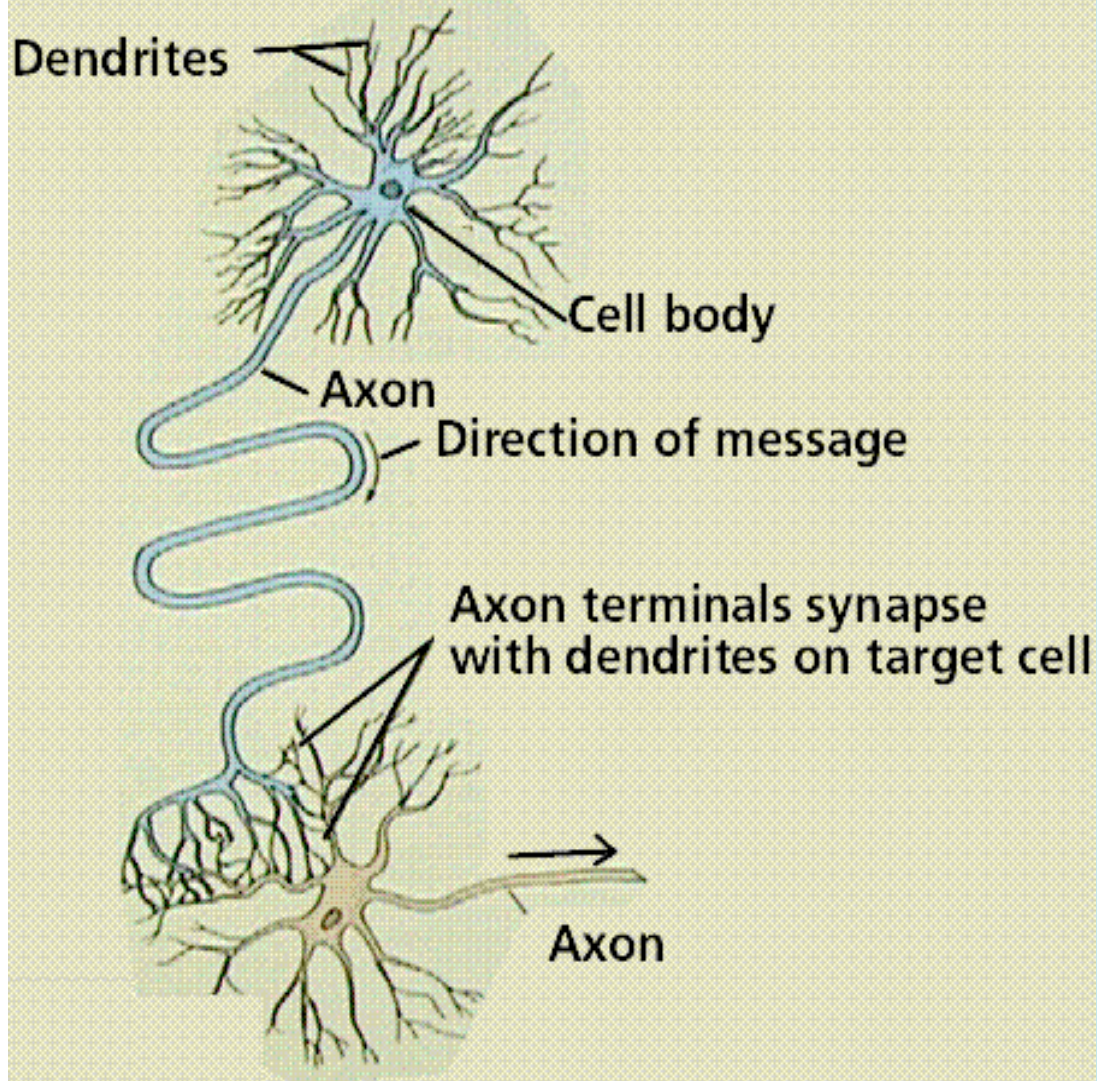
NERVES

- 12 CRANIAL
- 31 SPINAL



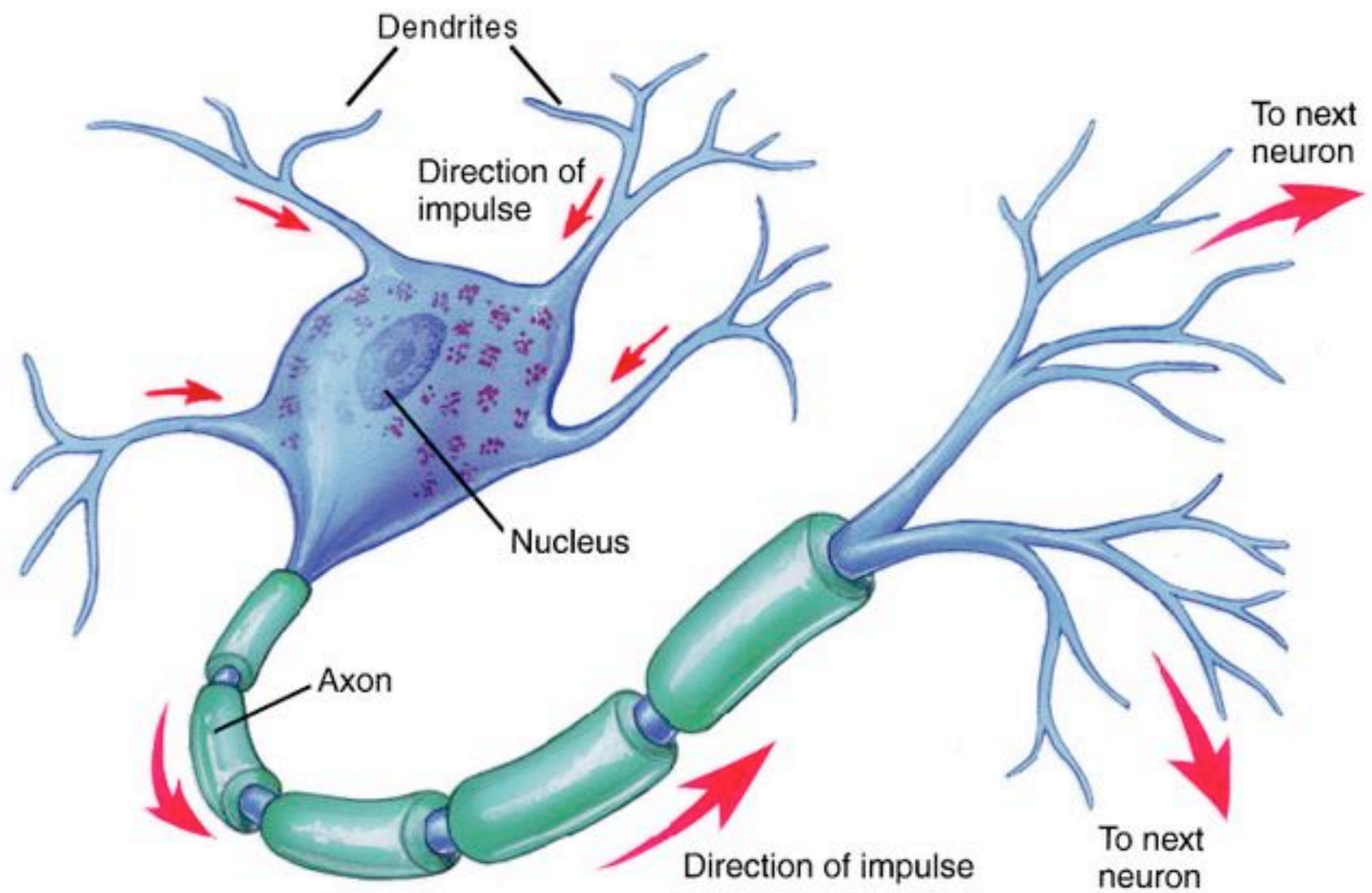
NEURON

NERVE CELL



Dendrites-
info into cell

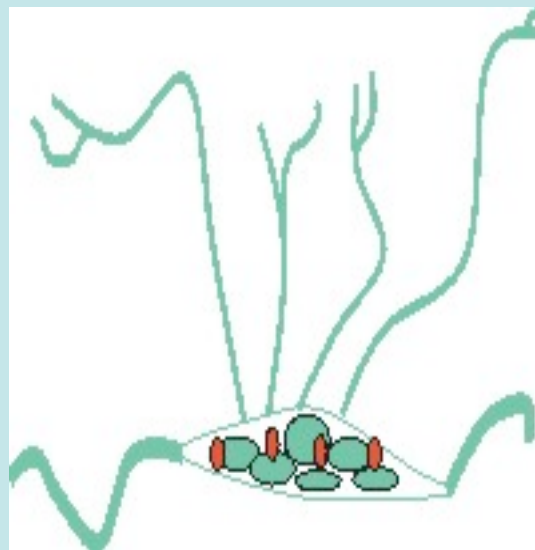
Axon-
info out of cell



TYPES OF NEURONS

SENSORY

- Brings info to Brain

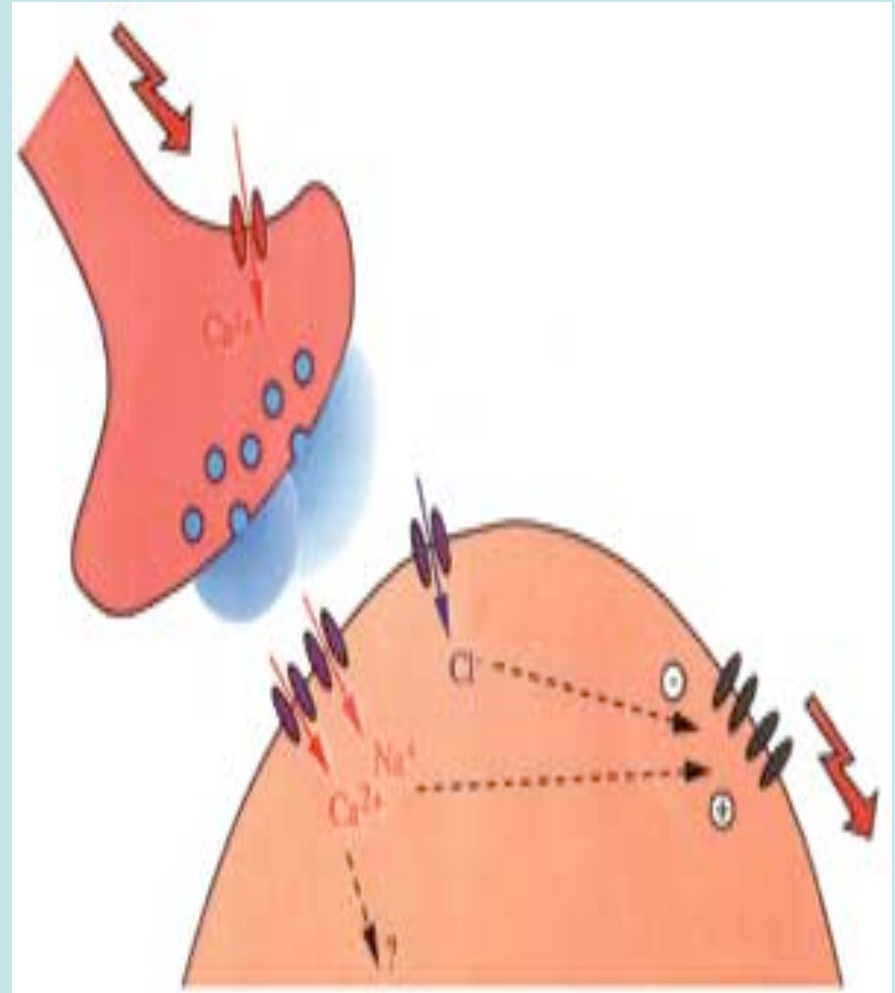


MOTOR

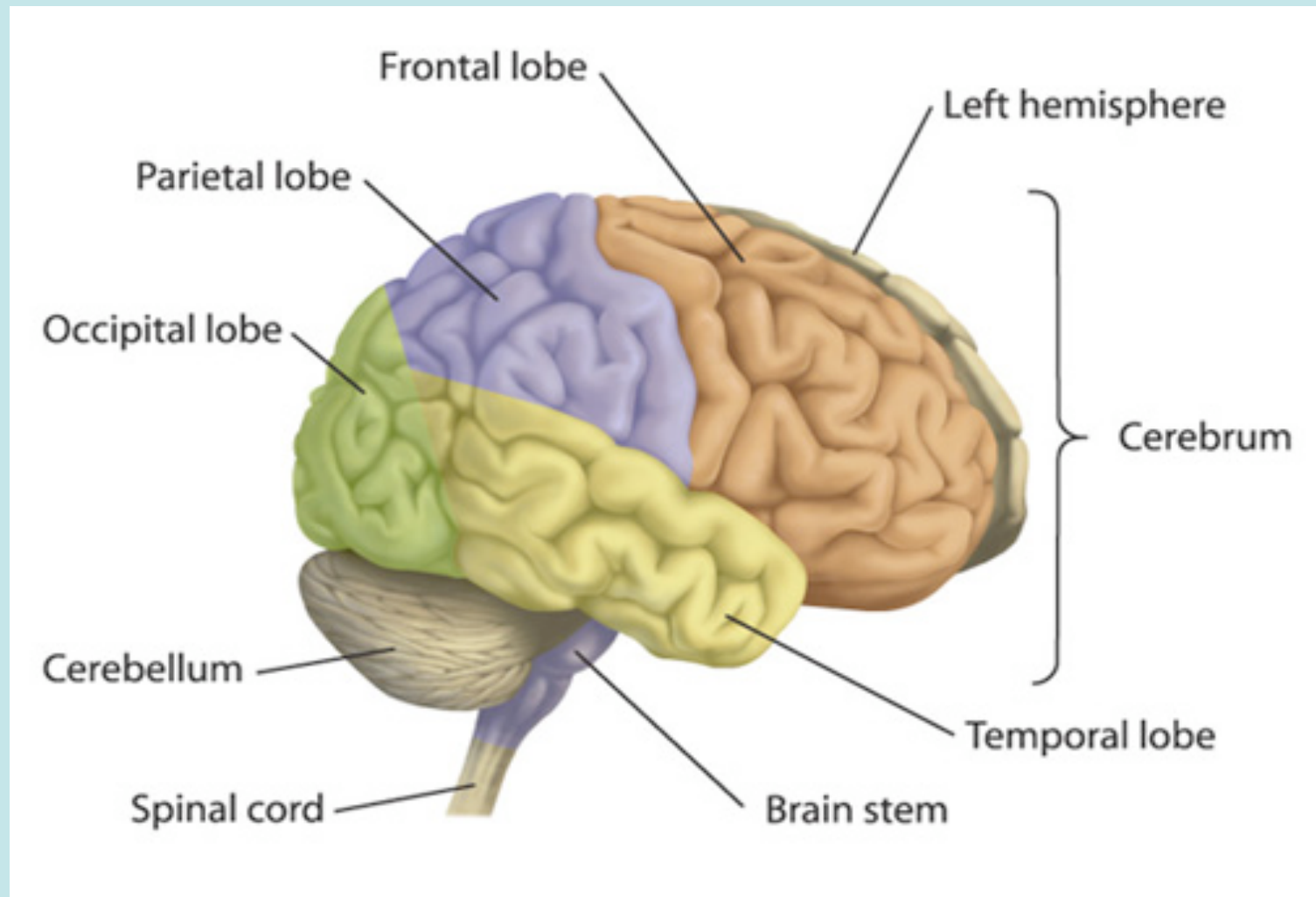
- Brings info from Brain

SYNAPSE

- Space between nerves
- Sends electrical impulses



PARTS OF BRAIN



PARTS OF THE BRAIN

CEREBRUM

- Thinking & reasoning
- Sensory info
- Skeletal muscles

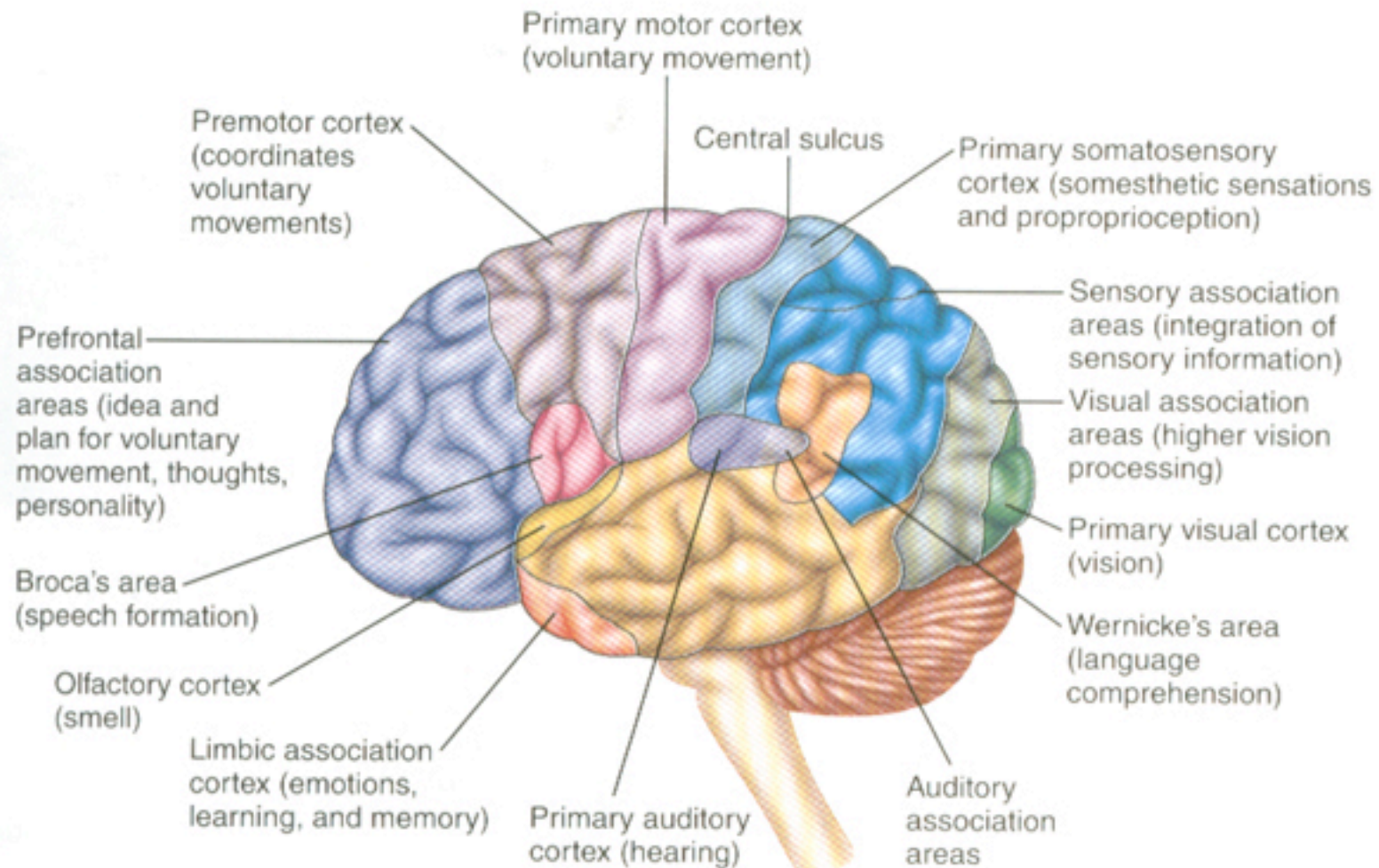
CEREBELLUM

- Motor skills
- Coordination & balance

MEDULLA OBLONGATA

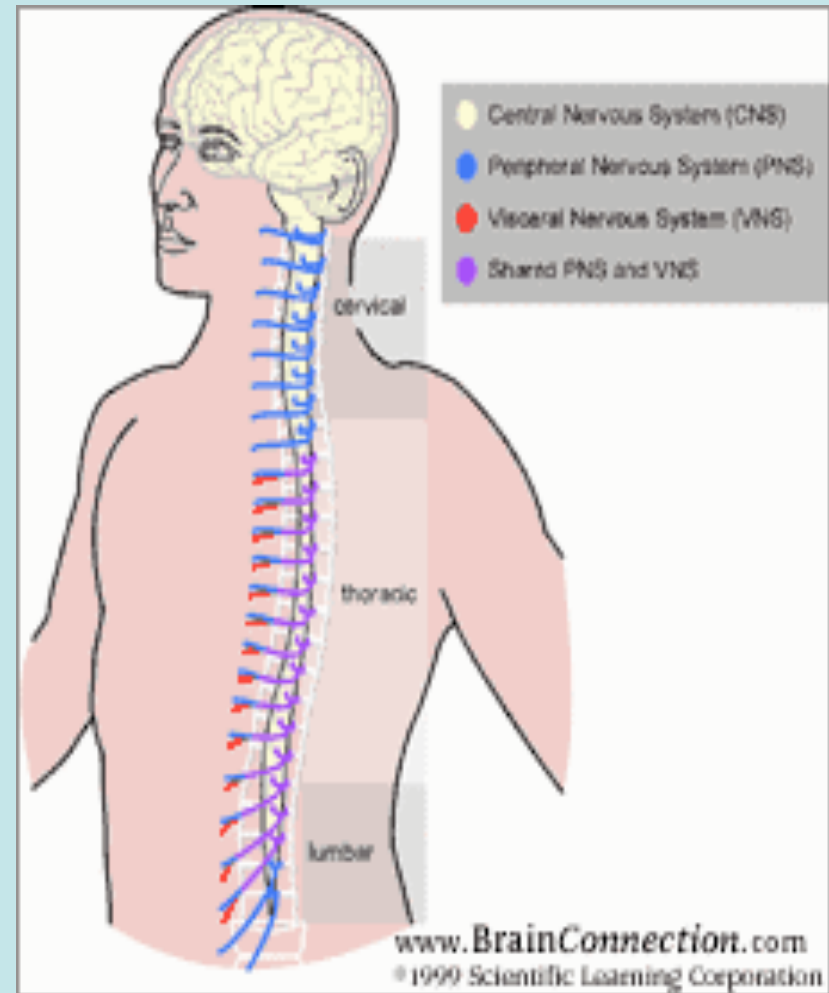
- Involuntary functions

Functional Organization of the Cerebrum



SPINAL CORD

Between
Brain
& Nerves



SENSORY INFO

**Brings Info of the
Environment to
the Brain**

**Senses: taste,
touch, smell,
sight, hearing**



VISION

Sensory organ
-brings
information
to the brain
on what's
around you.

Detects
visible
light.





Photoreceptors destroyed by disease