

URINARY SYSTEM



FUNCTION



§ TO RID THE BODY OF
EXCESS WATER AND
WASTE COLLECTED FROM
THE BLOOD

§ TO BALANCE SALT LEVELS

PARTS



ζ KIDNEYS-

- ψ main organ
- ψ Filters waste
(1 liter per
minute)

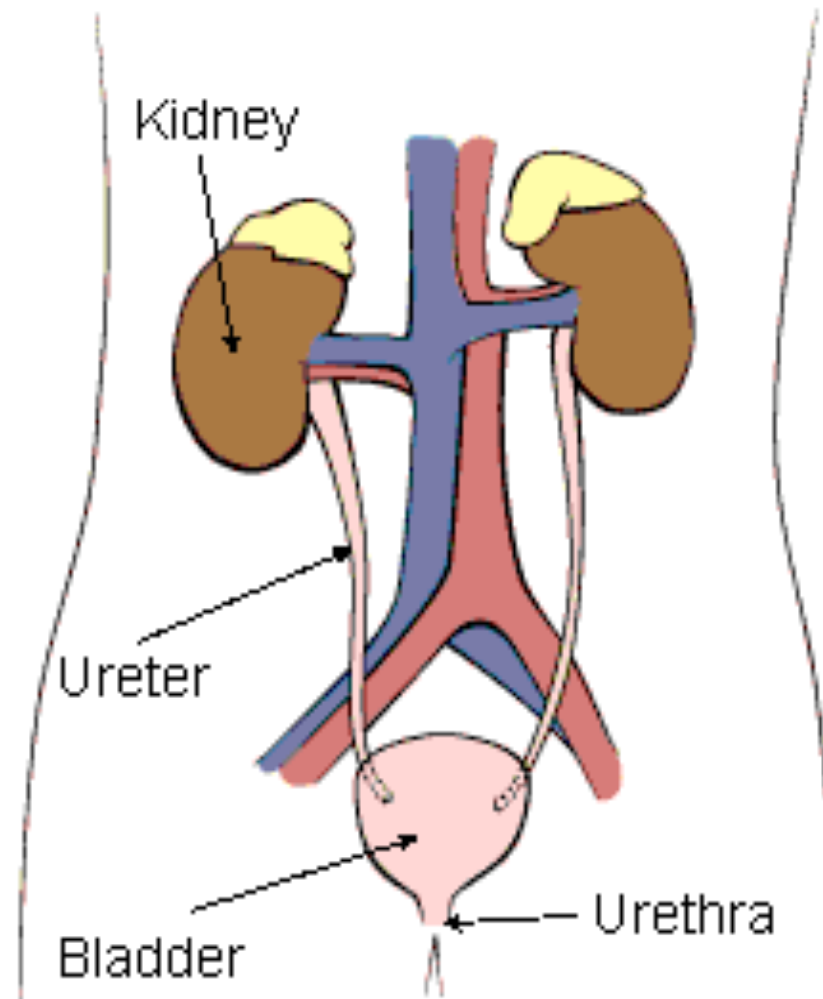
Ureters- tubes
between.

Bladder-

Holding tank

Urethra- tube
that leaves.

PARTS

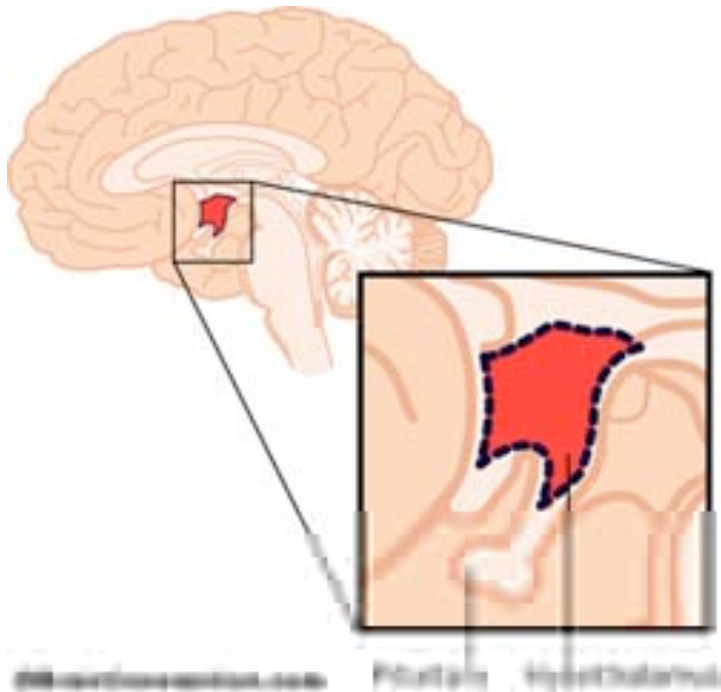


Gregory '97

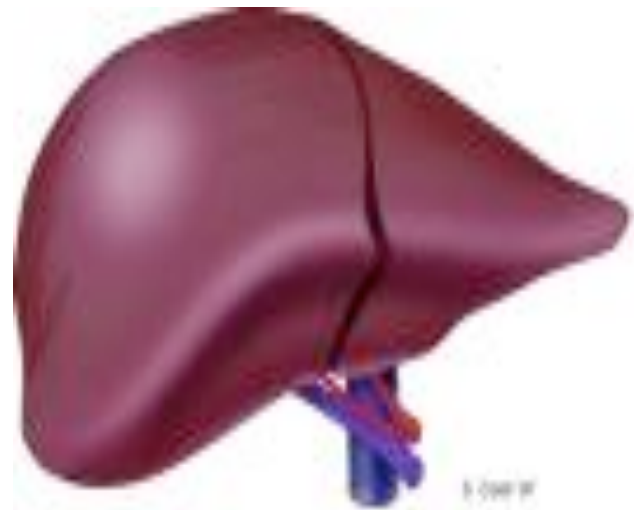
OUTSIDE HELP

ζ HYPOTHALAMUS

- part of brain
that controls



ζ LIVER- helps
filter toxins from
blood



OTHER WASTE EXPERTS



§ RESPIRATORY- excess CO₂

§ DIGESTIVE- undigested
waste

§ INTEGUMENTARY- excess
water & salts